

PLAT NO. 3, LOBLOLLY BAY, A P.U.D.

P.U.D. PHASE 12

BEING A REPLAT OF A PORTION OF PARCEL "D", LOBLOLLY BAY, A P.U.D., RECORDED IN P.U.D. PLAT BOOK 1, PAGE 14, AND A PORTION OF LOT 33, GOMEZ GRANT, PLAT BOOK 1, PAGE 80, TOWNSHIP 39 SOUTH, RANGE 42 EAST, MARTIN COUNTY, FLORIDA

SEPTEMBER, 1987

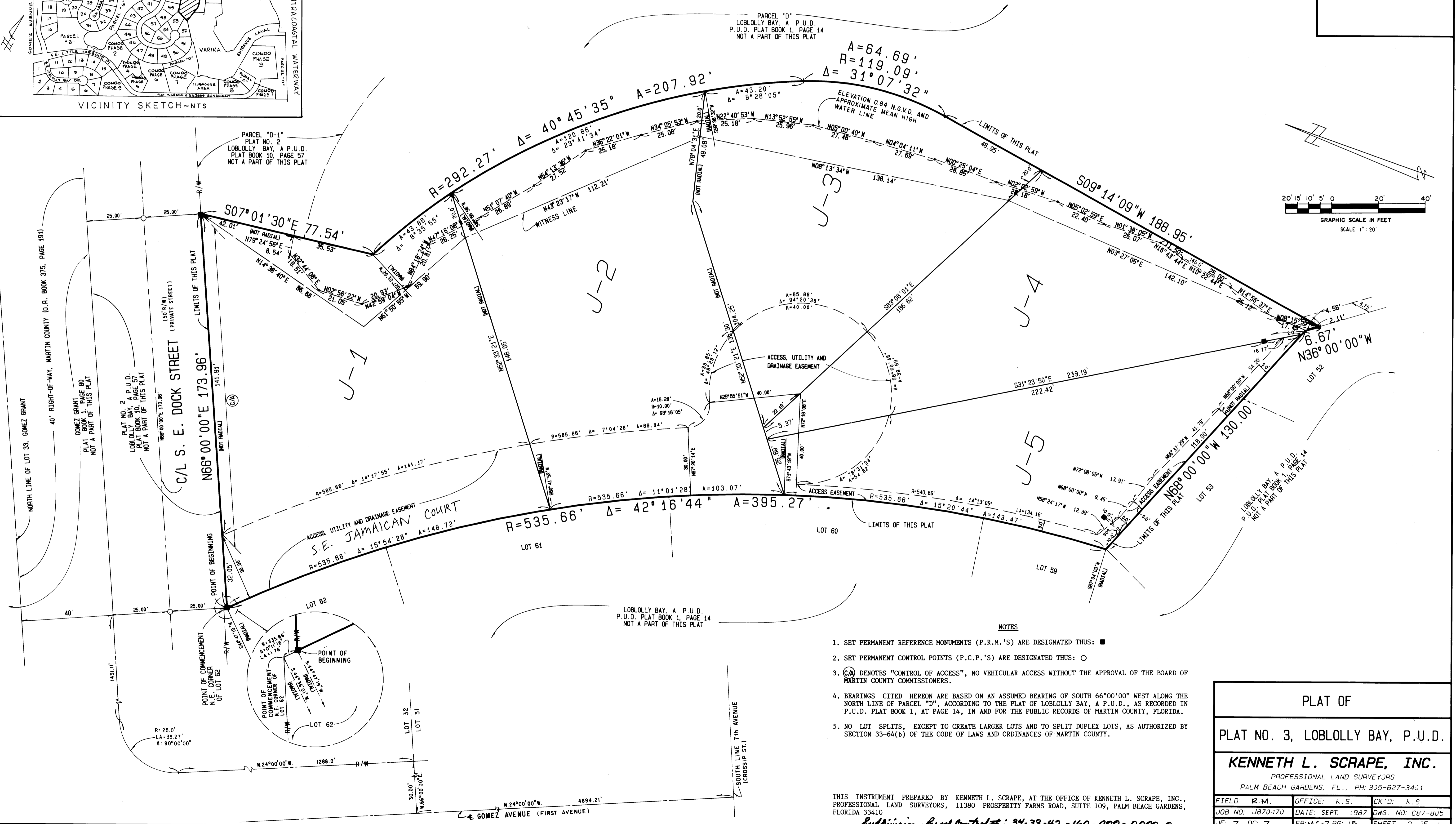
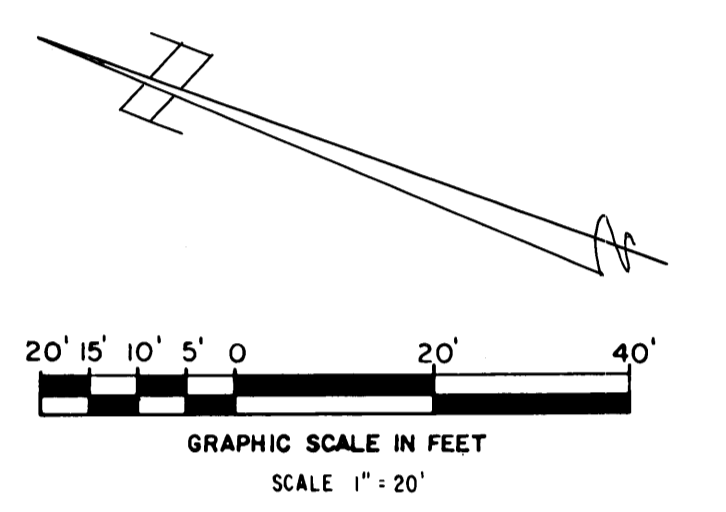
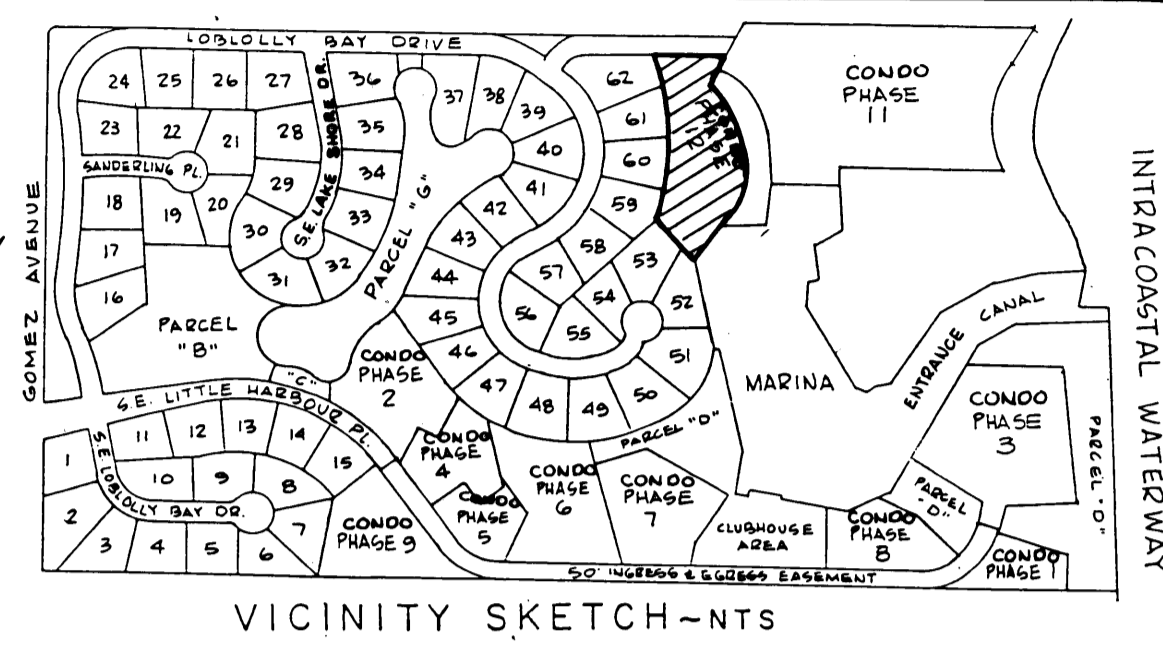
SHEET 2 OF 2

I, MARSHA A. STILLER, CLERK OF THE CIRCUIT COURT OF MARTIN COUNTY, FLORIDA, HEREBY CERTIFY THAT THIS PLAT WAS FILED FOR RECORD IN PLAT BOOK 11, PAGE 14, MARTIN COUNTY, FLORIDA, PUBLIC RECORDS, THIS _____, A.D., 1987.

MARSHA A. STILLER, CLERK
CIRCUIT COURT
MARTIN COUNTY, FLORIDA

BY: _____
DEPUTY CLERK

FILE NO.: _____



NOTES

1. SET PERMANENT REFERENCE MONUMENTS (P.R.M.'S) ARE DESIGNATED THUS: ■
2. SET PERMANENT CONTROL POINTS (P.C.P.'S) ARE DESIGNATED THUS: ○
3. (CA) DENOTES "CONTROL OF ACCESS", NO VEHICULAR ACCESS WITHOUT THE APPROVAL OF THE BOARD OF MARTIN COUNTY COMMISSIONERS.
4. BEARINGS CITED HEREON ARE BASED ON AN ASSUMED BEARING OF SOUTH 66°00'00" WEST ALONG THE NORTH LINE OF PARCEL "D", ACCORDING TO THE PLAT OF LOBLOLLY BAY, A P.U.D., AS RECORDED IN P.U.D. PLAT BOOK 1, AT PAGE 14, IN AND FOR THE PUBLIC RECORDS OF MARTIN COUNTY, FLORIDA.
5. NO LOT SPLITS, EXCEPT TO CREATE LARGER LOTS AND TO SPLIT DUPLEX LOTS, AS AUTHORIZED BY SECTION 33-64(b) OF THE CODE OF LAWS AND ORDINANCES OF MARTIN COUNTY.

PLAT OF
PLAT NO. 3, LOBLOLLY BAY, P.U.D.
KENNETH L. SCRAPE, INC.
 PROFESSIONAL LAND SURVEYORS
 PALM BEACH GARDENS, FL., PH: 305-627-3411

FIELD: R.M.	OFFICE: A.S.	CK'D: A.S.
JOB NO: JB70-170	DATE: SEPT. 1987	DWG. NO: C87-BJ5
JF: 7 DC: 7	FB: N.C.-7 PG: 15	SHEET 2 OF 2

THIS INSTRUMENT PREPARED BY KENNETH L. SCRAPE, AT THE OFFICE OF KENNETH L. SCRAPE, INC., PROFESSIONAL LAND SURVEYORS, 11380 PROSPERITY FARMS ROAD, SUITE 109, PALM BEACH GARDENS, FLORIDA 33410
 Subdivision Parcel Control #: 34-38-42-160-000-0000.0